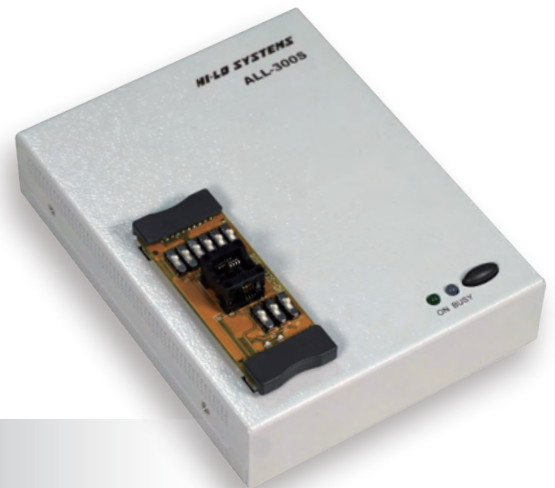


ALL-300S

Engineering Universal Programmer

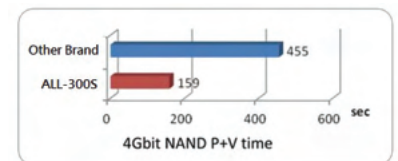
- Support **eMMC**
- Excellent programming performance on high-density **NAND Flash** and **eMMC**
- Palm-size and space saving
- Best for engineering development and QC inspection



Feature

Excellent programming performance

- Cutting-edge programming core delivers the fastest and most stable programming performance on high-density NAND Flash and eMMC
- Full IC pin contact check prevents bad contact in socket or IC damage from reversed placement



High data transfer speed

- USB3.1 Gen 1 (USB3.0) transferring interface significantly increase the programming speed

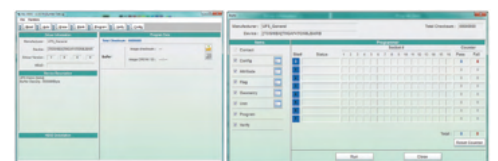
Support wide range of IC devices and packages

- Device supported: UFS, eMMC, eMCP, MCU/MPU, NOR/NAND Flash EEPROM, SPI Memory, FPGA, CPLD, etc.
- Package supported: DIP, SDIP, SOP, SSOP, TSOP, PLCC, QFP, QFN, SON, BGA, WLCSP, etc.



Brand-new software interface

- Intuitive graphical user interface
- Clear display of each function in the entire programming procedure
- Display details and status of each device during programming



Timely software support

- Fast software support by customer's request
- The supporting software is updated weekly on HI-LO website for checking or retrieving
- All programming problems will be followed and handled immediately



ALL-300S *Engineering Universal Programmer*

Specification

Device supported	UFS, eMMC, eMCP, MCU/MPU, NOR/NAND Flash EEPROM, SPI Memory, FPGA, CPLD, etc.
Package supported	DIP, SDIP, SOP, SSOP, TSOP, PLCC, QFP, QFN, SON, BGA, WLCSP, etc.
Support IC pin count	8 pins ~ 300 pins
Socket number	1 socket
Key functions	Load File, Read Master, Program, Verify, Auto, ID Check, Checksum, Blank Check, Erase, Secure, Protect / Unprotect, Edit, Function Configuration, Self Test, etc.
Data transfer interface	USB 2.0, USB 3.1 Gen1 (USB3.0)
Compatible OS	Windows 7, 10
Power	AC 100 - 240V / 50 - 60Hz
Power consumption	60 W
Operation temperature	0 ~ 40°C (32 ~ 105°F)
Dimension	W140 x D181 x H45 (mm)
Weight	1.12kg
Certification	CE certified

2022.03 version

HI-LO SYSTEMS

Headquarters

Hi-Lo System Research Co. Ltd.

4F, No. 18, Ln. 76, Rueiguang Rd.,
Neihu Dist., Taipei City 11491, Taiwan (R.O.C.)
Tel: +886-2-8792-3301
sales@hilosystems.com.tw

**Hi-Lo Systems Shenzhen
/Shenzhen Programming Center**
Zone A, 2F, Building H, Gang Zhi
Long Technology Park, Qinglong Rd.,
Longhua New Dist., Shenzhen City,
Guangdong Province, China
Tel: +86-755-8253-6987
Solution@hilosystems.cn

Taipei Programming Center
5F, No. 110, Ruiguang Rd.,
Neihu Dist., Taipei City 114062,
Taiwan (R.O.C.)
Tel: +886-2-8792-3301
service4@ms1.hilosystems.com.tw

**Hi-Lo Systems Suzhou
/Suzhou Testing Center**
C block, No.66 Wangmi Street,
Huqiu District, Suzhou Shi,
Jiangsu Sheng, China
Tel: +86-512-6920-3003
Solution@hilosystems.cn

Hsinchu Testing Center
2F-12, No. 81, Shuili Rd.,
East Dist., Hsinchu City 300053,
Taiwan (R.O.C.)
Tel: +886-3-516-9032
service2@hilosystems.com.tw

Falcon Denshi K.K.(Japan)
1-1-20 Kounandai Kounan-Ku,
Yokohama-shi Kanagawa
Japan Zip 234-0054
Tel: +81-45-367-8326
info@falcon-denshi.co.jp

Tainan Programming Center
2F, No. 100, Gongye 2nd Rd.,
Annan Dist., Tainan City 709015,
Taiwan (R.O.C.)
Tel: +886-6-384-0509
hilosale@hilosystems.com.tw

USA HI-LO Systems
1608 Virginia Dr., Manhattan,
KS 66502 USA
Tel: +1-785-320-6992
sales@hilosystems.com

Hong Kong Programming Center
B2~B4, 8/F, Lladro Centre, No. 72,
Hoi Yuen Rd., Kwun Tong,
Kowloon, Hong Kong
Tel: +852-3568-4001
service@hilosystems.com.hk

